

STANDARD HANDLE

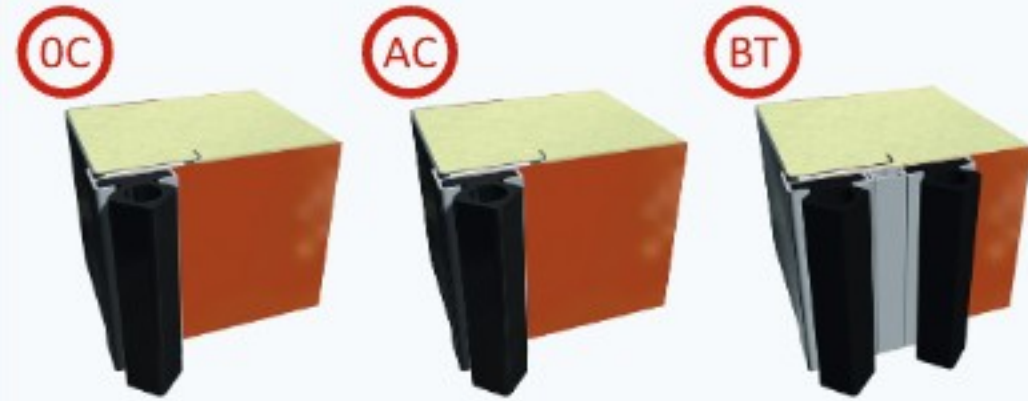
# FI 91D CD

STAINLESS STEEL HINGES

## GENERAL CHARACTERISTICS

- Hinged door type.
- The door panel is made up of a satin stainless steel (AISI 304) structure.
- Stainless steel hinges with raising action during opening phase.
- Internal push handle and strike plate.
- External handle with lever release.
- Foam density 40 Kg/mc.
- All are regularly supplied with counterframe with Threshold (without threshold on request)

## CHOICE OF THE DOOR PANEL



### OC FOR COLD ROOMS UP TO -5°C

- Door panel thickness 95mm.
- Perimetral and under-door sealing gaskets.



### AC FOR CONTROLLED ATMOSPHERE ROOMS

- Door panel thickness 95mm.
- Perimetral and under-door sealing gaskets.
- Openable porthole, with wooden structure and internal protective gaskets.
- Closing knobs and a handle with lock and key.
- Small and stylized eccentric handles on the sides, for a perfect sealing.
- Rings for padlocks.

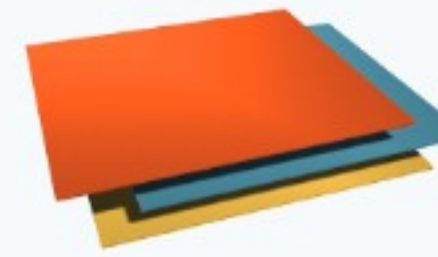


### BT FOR LOW TEMPERATURE ROOMS UP TO -30°C (OUTSIDE THE ROOM)

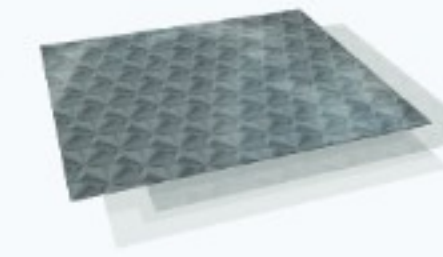
- Door panel thickness 115mm.
- Double perimetral and under-door sealing gaskets.
- Perimetral heating wire for door panel (between the two gaskets).
- Heating wire for threshold.
- Heating wire for stainless steel counterframe.



## CUSTOMIZE THE PRODUCT

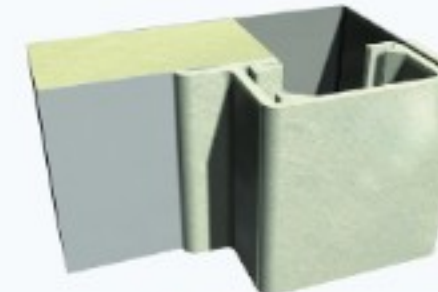


PREPAINTED  
METAL SHEET PANELING

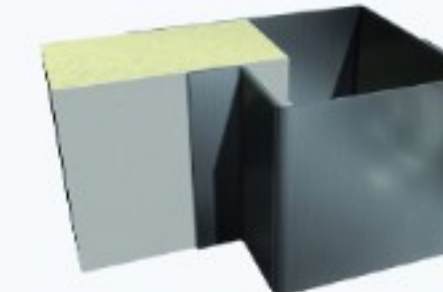


AISI 304 STAINLESS STEEL  
METAL SHEET PANELING

## COUNTERFRAME EXECUTION



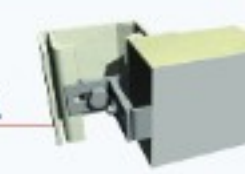
POLTRUDED  
FIBERGLASS



SATIN AISI 304  
STAINLESS STEEL

## FASTENING SYSTEMS

FIXING TO  
ISOLATED PANEL

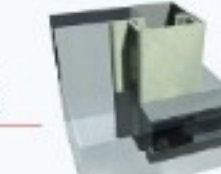


FIXING TO  
CONCRETE WALL



## FLOOR APPLICATION

COUNTERFRAME  
WITH THRESHOLD  
90mm



COUNTERFRAME  
WITHOUT THRESHOLD



Z L+350 L+150 H+75 BT L+390 AC L+460 OC L+370

## OPTIONALS (UPON REQUEST)

- Connecting plates.
- Fixed porthole.
- Lower support wheel.
- Doorcloser.
- External handle with three latches.
- Openable porthole (0°C- C.A. doors)
- Gas valves (C.A. doors).



MORE OPTIONS  
UPON REQUEST



RAL 2009 RAL 1018 RAL 5010 RAL 5024 RAL 9002 RAL 9010 STAINLESS STEEL WHITE FIBERGLASS



ENGLISH

